

DAMAC




SAFA GATE
SHEIKH ZAYED ROAD

URBAN VERVE
MEETS NATURAL
SERENITY





THE HIGHLIGHT OF PANORAMIC LIVING



YOUR GATEWAY TO THE SHEIKH ZAYED ROAD PLATINUM DISTRICT

SAFA GATE redefines the essence of the Platinum District's opulent living experience. It is your key to unlocking the best of Dubai's vibrant urban spirit. Step into a world where convenience meets sophistication, and make your mark in one of the most coveted address in the region.

RISE ABOVE THE CITY
AND EXPERIENCE
LUXURY THAT MAKES
YOUR SPIRIT SOAR


SAFA GATE
SHEIKH ZAYED ROAD


SAFA GATE



YOUR TOWERING URBAN OASIS AWAITS

SAFA GATE stands as a landmark of architectural ingenuity and luxury living. Its sleek, soaring silhouette pierces the Dubai skyline, featuring a stunning glass façade that reflects the city's vibrant energy. The tower's distinctive design incorporates bold design elements, creating a visual masterpiece that is as functional

as it is beautiful. With its innovative sky gardens and panoramic viewing decks, SAFA GATE blurs the line between indoor and outdoor living, offering residents unparalleled views and a sense of floating above the bustling metropolis.



RESIDE IN THE
HEART OF THE CITY

SAFA GATE
SHEIKH ZAYED ROAD



7 MINS

BURJ KHALIFA



9 MINS

DUBAI INTERNATIONAL
FINANCIAL CENTRE



10 MINS

THE STABLES DUBAI, MEYDAN



12 MINS

MGM RESORT ISLAND



14 MINS

DUBAI INTERNATIONAL AIRPORT



14 MINS

DUBAI HARBOUR



14 MINS

DUBAI CREEK GOLF
& YACHT CLUB



16 MINS

PALM JUMEIRAH



35 MINS

JETEX VIP TERMINAL



DXB



BURJ
KHALIFA



BURJ
AL ARAB

UMM SUQEIM

SHEIKH ZAYED ROAD

DUBAI

SHEIKH MOHAMMED BIN ZAYED ROAD

EMIRATES ROAD

DAMAC
HILLS

DAMAC
Lagoons



DUBAI
INVESTMENT
PARK

AL YALAYIS ROAD

EXPO ROAD



EXPO 2020 VENUE



AL QUDRA ROAD

D2
DAMAC HILLS 2



A MESMERISING GALLERY OF MATCHLESS CITYSCAPES

Enjoy a never seen before perspective of Dubai's stunning natural landscape. Discover a world of natural wonder from the emerald expanse of Safa park flora to the tranquil embrace of the Jumeirah seascape. Every day

offers a new masterpiece painted across the infinite sky right outside your window. Not to mention the views of Dubai icons, such Dubai Canal, Burj Al Arab and Burj Khalifa across Sheikh Zayed Road.



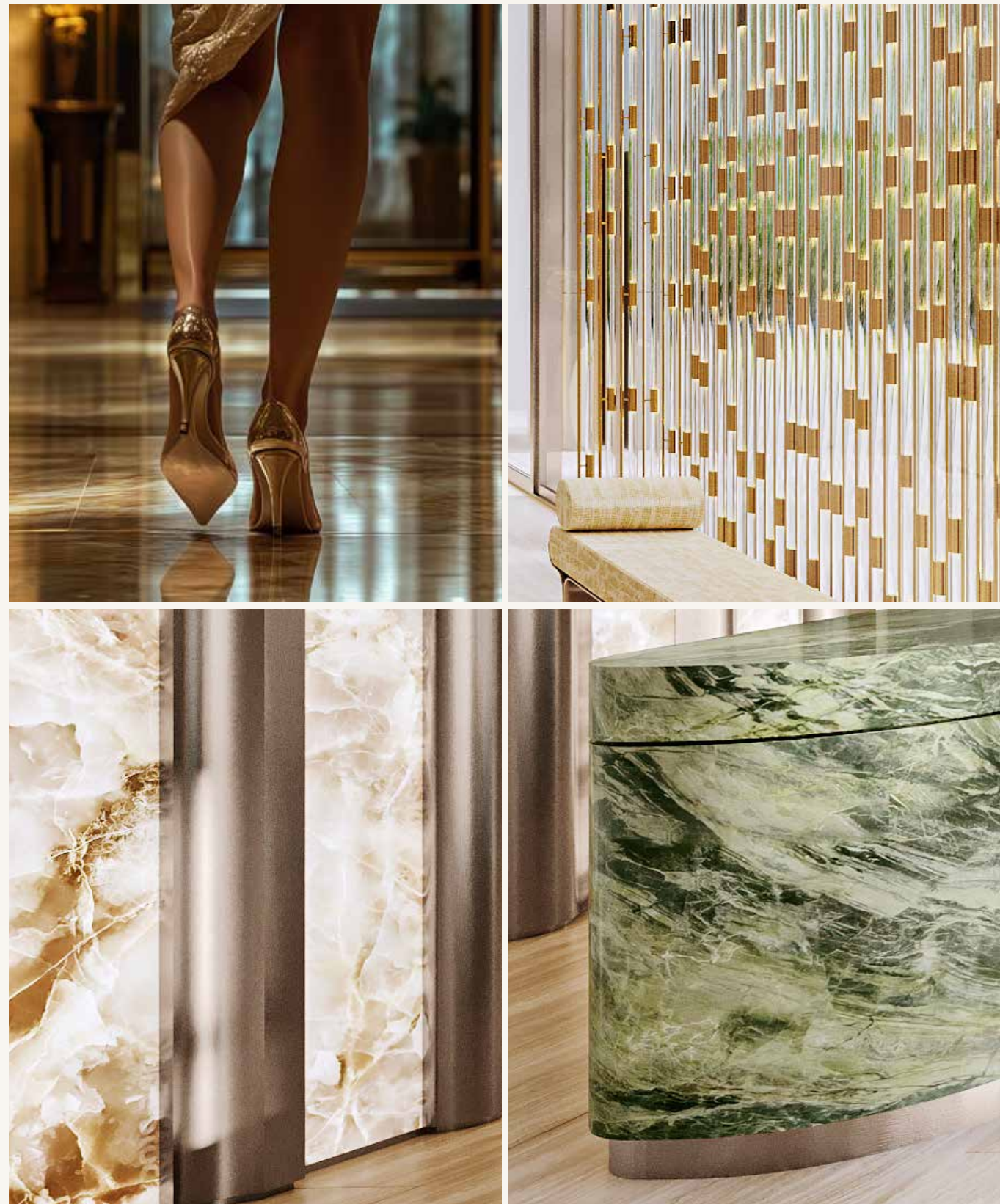


THE EPICENTRE OF EFFORTLESS LIVING

Nestled along Sheikh Zayed Road, Safa Gate emerges as a sophisticated urban sanctuary seamlessly blending metropolitan energy with serene living. Strategically positioned beside the lush Safa Park and the Dubai Canal, this location offers residents an extraordinary lifestyle anchored by proximity to Dubai's most coveted destinations - from the vibrant City Walk and sophisticated Jumeirah to the iconic Dubai Mall and cultural Al Wasl Road.



KINETIC GEOMETRY



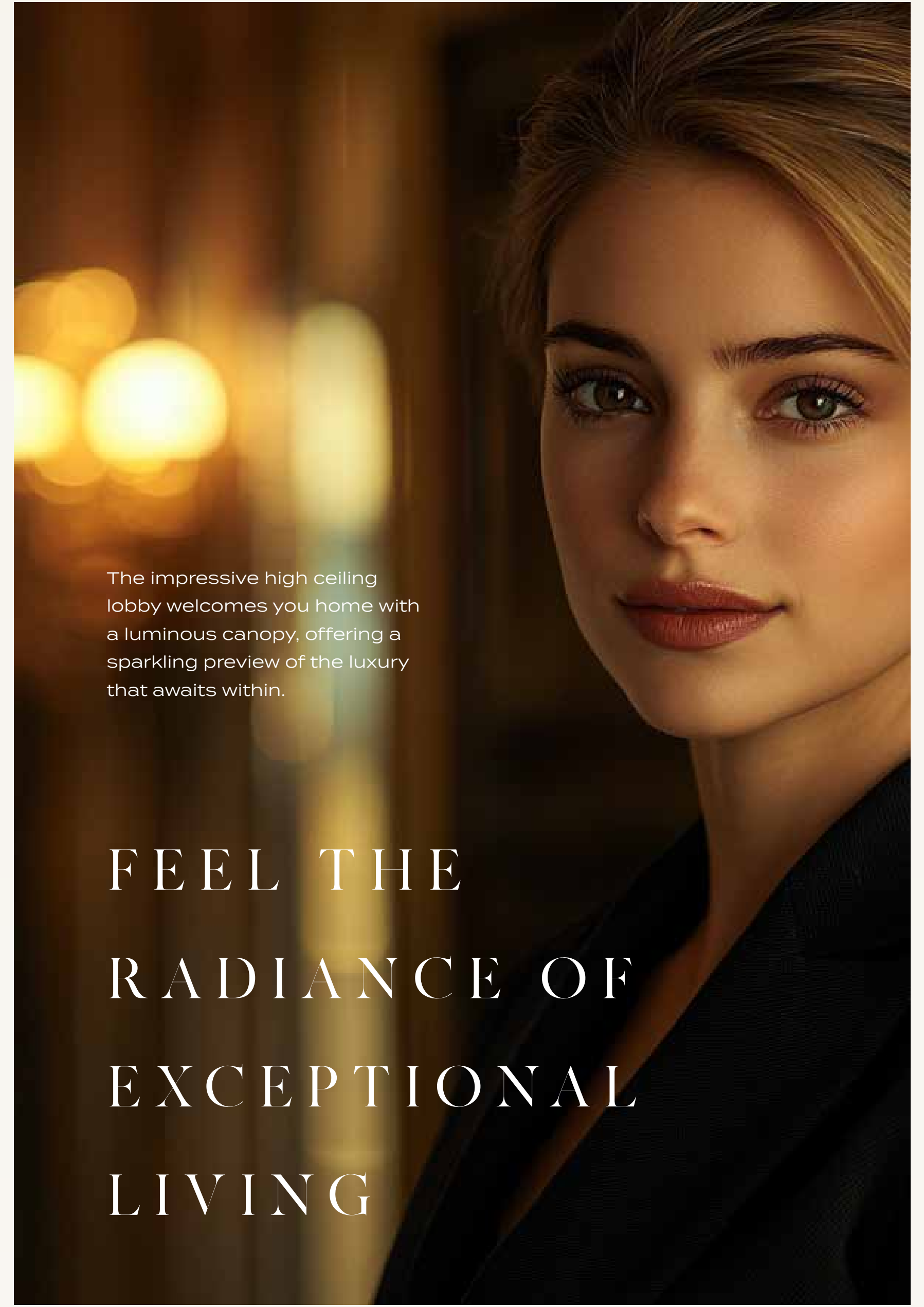
Witness an architectural narrative that breathes and transforms. Safa Gate's design language explores dynamic interactions between solid and void, and a play of light and shadows to create a living structure that adapts and responds to its urban environment with remarkable sophistication and visual complexity. The design orchestrates an intricate dialogue between fluid form, material innovation, and human-centric spatial experiences.



D A M A C S A F A G A T E



D A M A C S A F A G A T E

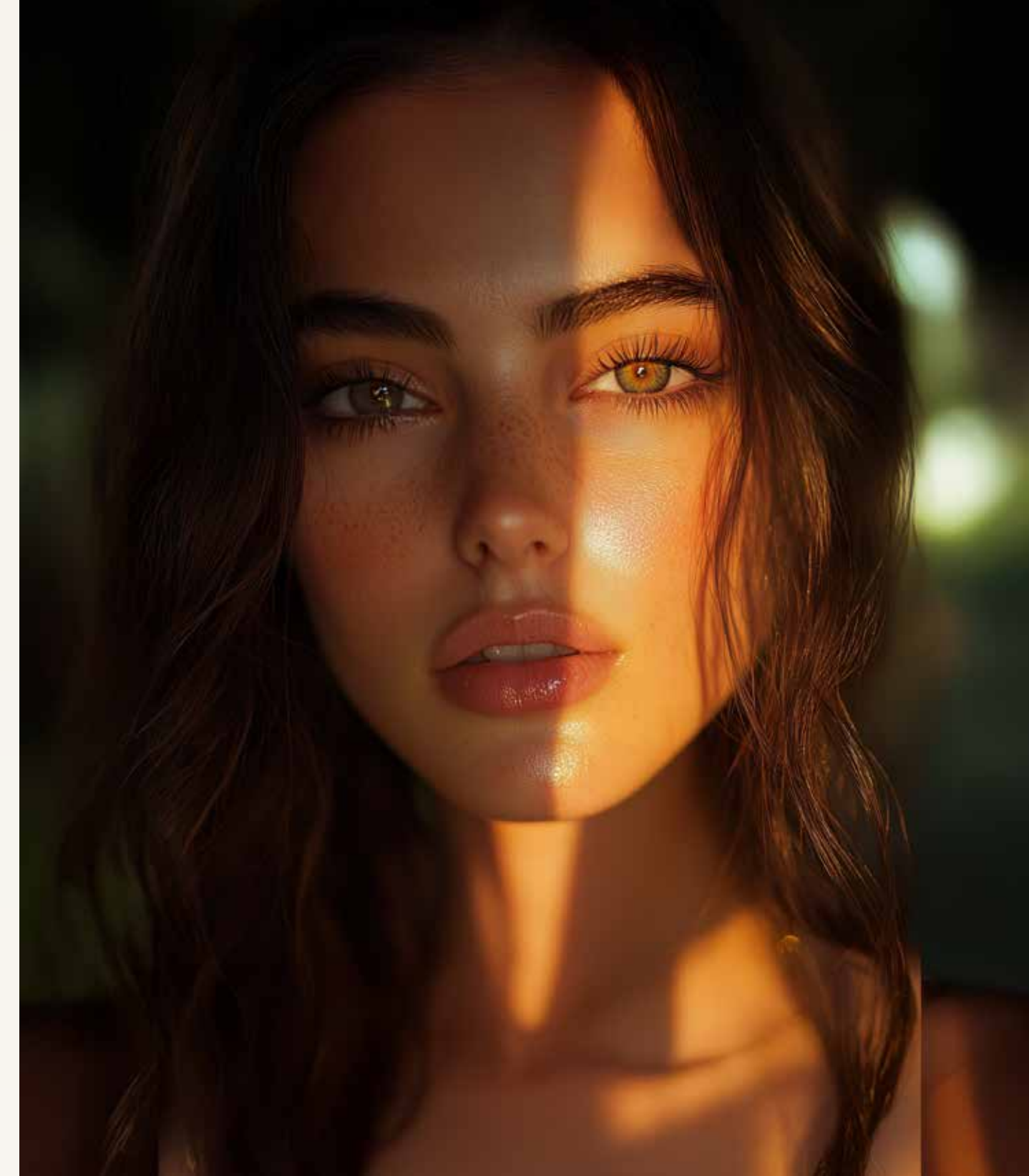


The impressive high ceiling lobby welcomes you home with a luminous canopy, offering a sparkling preview of the luxury that awaits within.

FEEL THE
RADIANCE OF
EXCEPTIONAL
LIVING

A CONNOISSEUR'S HAVEN

SAFARI GATE



Perched above the city, a private cigar lounge where you can pair your rare vintages with your cigar collection in an atmosphere of timeless sophistication. With intimate gathering spaces framed by panoramic views, this exclusive retreat transforms evening rituals into extraordinary moments.





KALIEDOSCOPIC WONDERLAND



Watch the Aurora Pool transform before your eyes, as vibrant hues dance and shimmer across the water, creating a mesmerising spectacle.

SINK INTO BLISS

Gather your friends and family for a memorable experience. Our circular sunken pool seating offers a unique and intimate space to unwind and socialize.





Experience the future of fitness in the Gravity Gym. Discover a new level of challenge and motivation in a state-of-the-art zone, inspired by the forces of gravity and celestial motion.

OUT OF THIS WORLD FITNESS

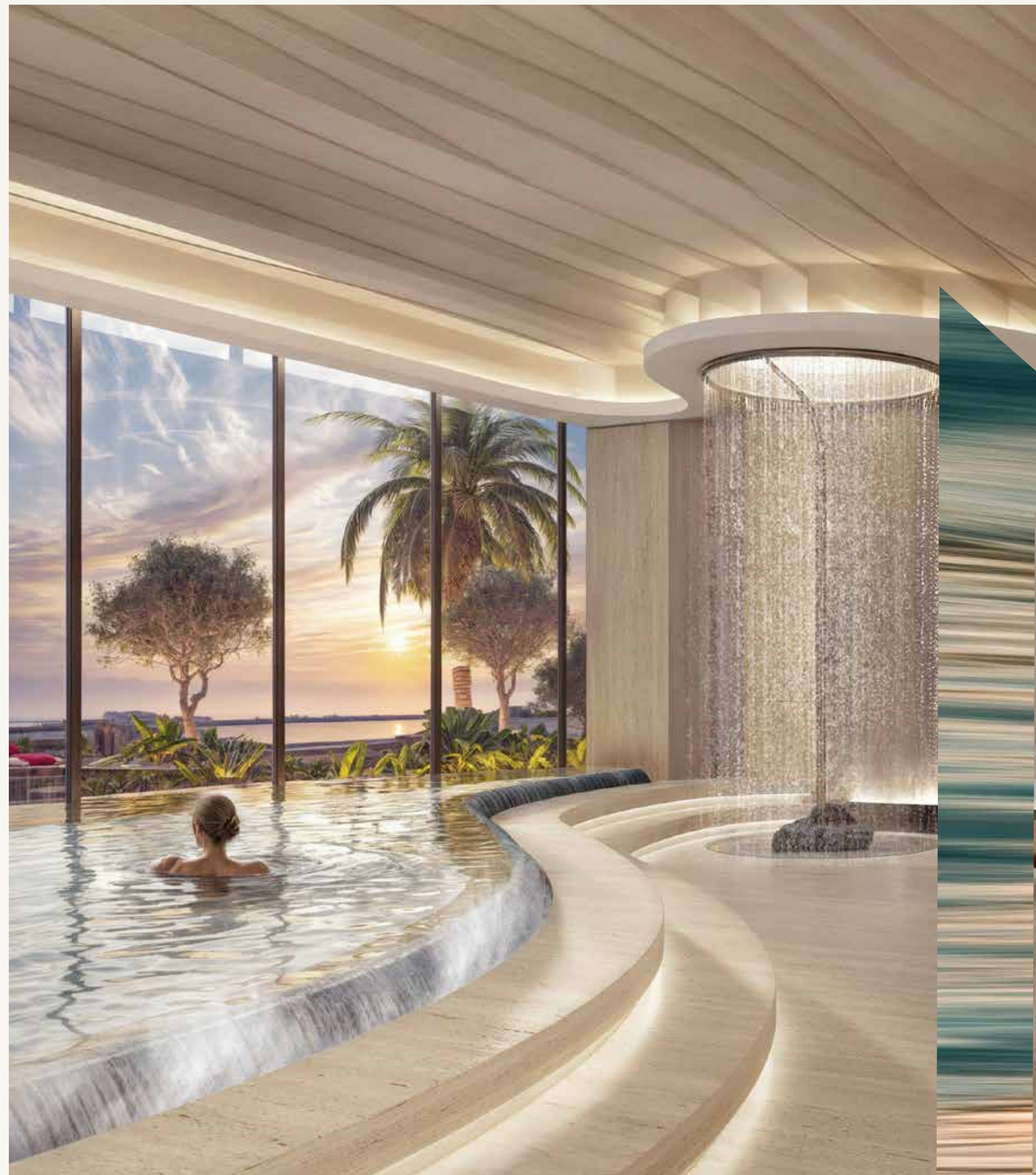




D A M A C S A F A G A T E

ESCAPE TO BLISSFUL REJUVINATION

Enter the Lumière Spa, where golden light therapy and pristine hydrotherapy pools create an oasis of renewal. Our meditation dome, infused with choreographed light sequences and surrounded by living gardens, transforms wellness into an art. Here, ancient healing meets modern luxury, offering a sanctuary of radiant rejuvenation above the city.





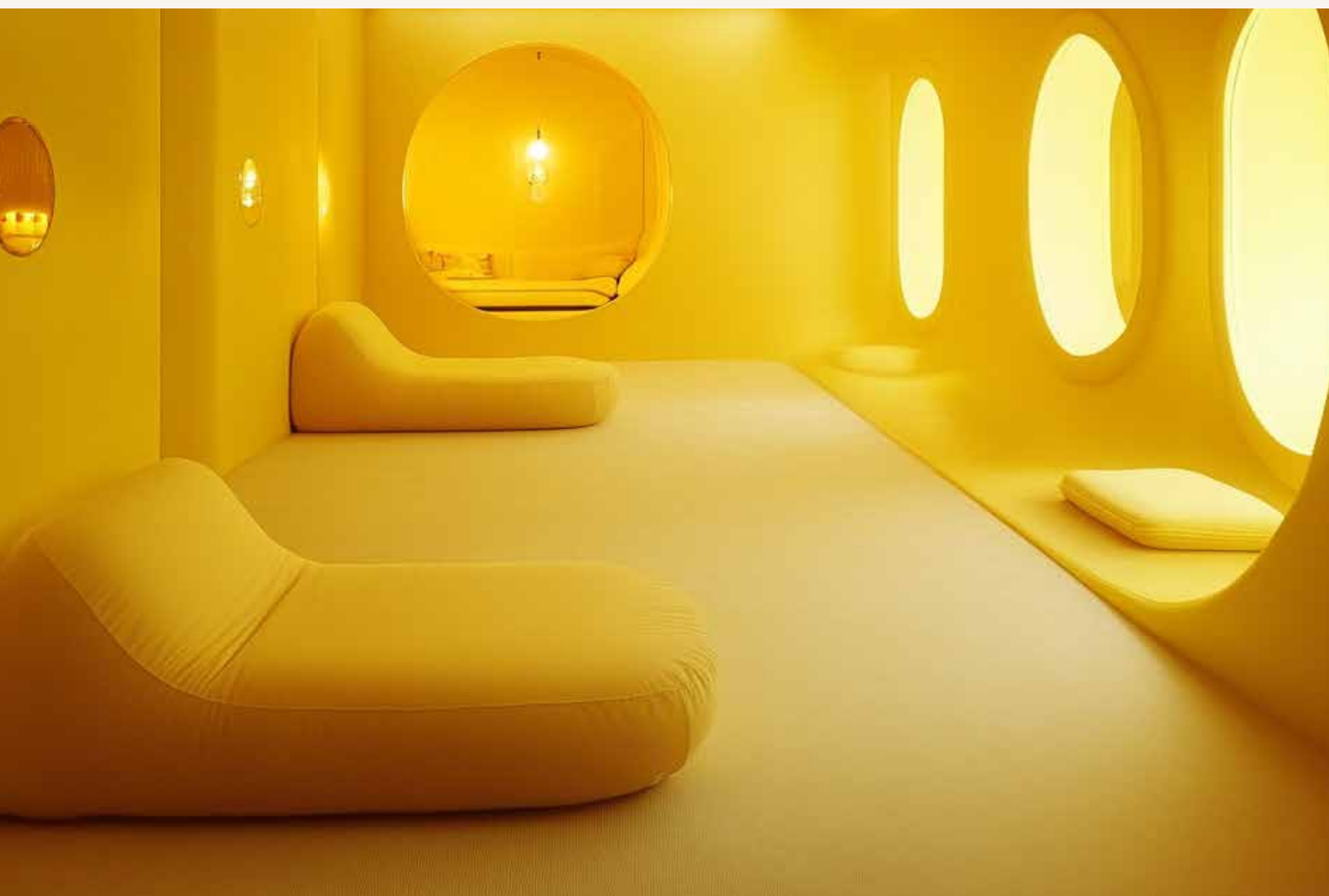
WORK MEETS WELLNESS

Experience the benefits of ergonomic furniture, tech integration, and natural elements in the Co-working Pods. Escape the noise and distractions to focus and recharge in a collaborative environment.

D A M A C S A F A G A T E



THE LIGHT RETREAT



Step into a space where light becomes therapy. Our pioneering chamber harnesses chromotherapy technology to create an immersive haven of healing radiance. As gentle waves of light wash over you, feel the day's tensions dissolve in this groundbreaking fusion of wellness and innovation.



COSMIC CURTAIN CALL



Enjoy screenings and performances at the exclusive Eclipse Theatre, featuring a stunning ceiling designed to mimic the celestial phenomenon of a solar and lunar eclipse.

WORKOUTS WITH A VIEW

Break free from conventional fitness spaces. Our open-air gym on Level 5, transcends traditional workout environments, inviting you to challenge your body while your eyes feast on Dubai's breathtaking cityscape



ENJOY AN ELEVATED RENDEZVOUS

Botanical artistry meets Dubai's golden hour, our rooftop sanctuary elevates the art of evening leisure. Nestled among curated gardens, this exclusive belvedere offers masterfully crafted drinks against a canvas of Dubai's most captivating sunsets. As day transforms to dusk, watch the city ignite while surrounded by the serenity of elevated gardens and the sophistication of artisanal mixology.



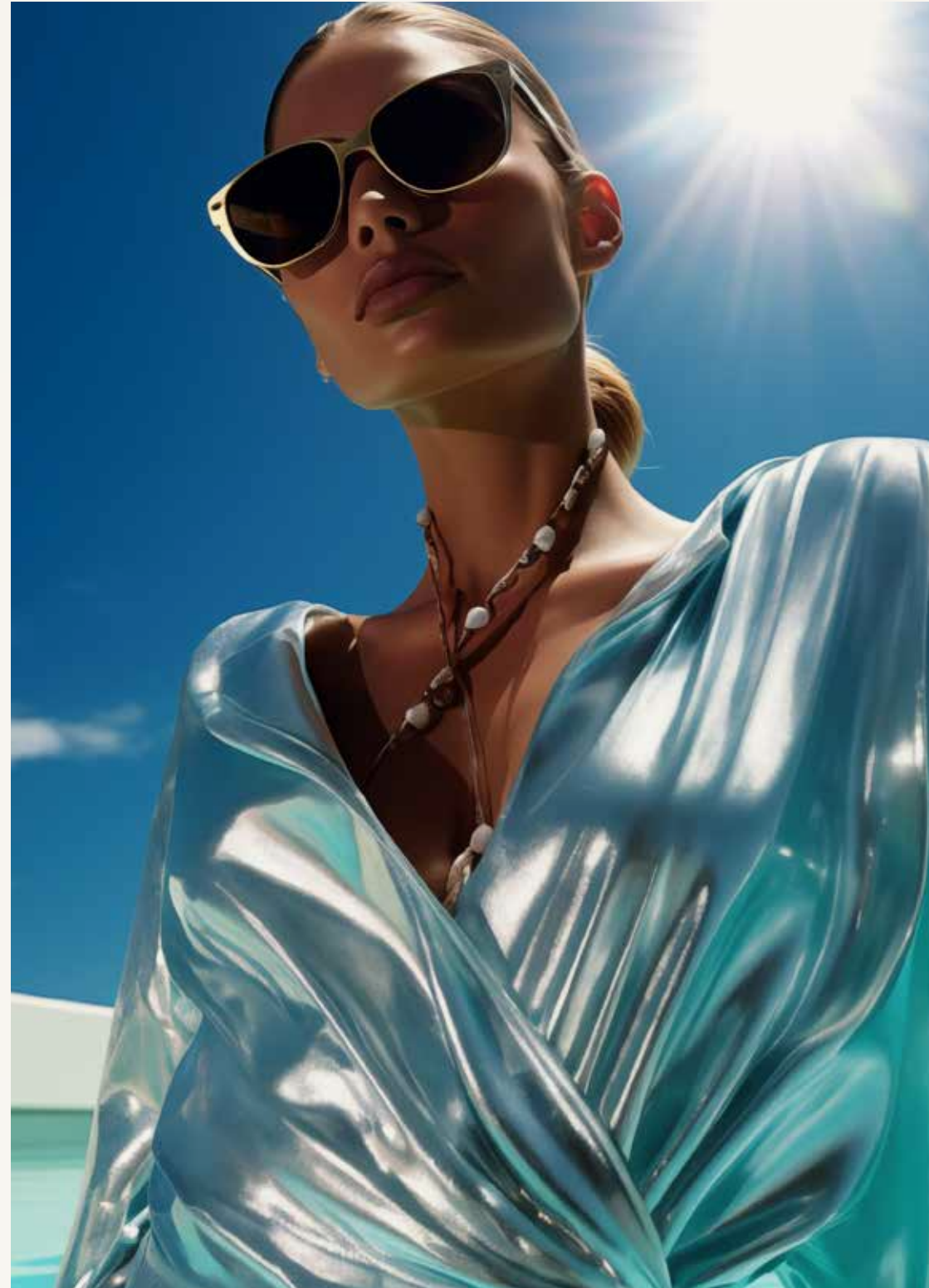
SUNDANCE IN THE SKY

Ascend to a celestial perch, where Dubai unfolds beneath you in a breathtaking 360-degree panorama. Designed to echo the fiery dance of solar flares, this observation deck offers an unparalleled vantage point, a stage where the city's vibrant tapestry meets the vast canvas of the sky.



YOUR AERIAL WELLNESS RETREAT

Escape the city's clamour and immerse yourself in tranquility. Our retreat pool, a sanctuary of serenity, invites you to unwind amidst a symphony of soothing water and the gentle embrace of native flora. Here, amidst the verdant tapestry and the murmur of flowing water, find your center and rediscover the art of peaceful repose.



RELAXATION MEETS
INSPIRATION



Immerse yourself in serenity, where the tranquil embrace of our Zen plunge pool meets the breathtaking panorama of Dubai. Here, amidst the soothing murmur of water and the stunning cityscape, find a sanctuary for both productivity and profound relaxation. Let the tranquil environment inspire your thoughts and renew your spirit, offering a unique escape from the everyday.



THERE IS NO SOLITUDE IN THE WORLD
LIKE THAT OF THE BIG CITY

— KATHLEEN NORRIS



SKY MEETS SERENITY

Step into a world of unparalleled luxury where expansive living spaces meet breathtaking panoramas. Sunlight streams through floor-to-ceiling windows, illuminating the grand living room which features a sweeping duplex staircase that ascends to a private sanctuary above.







Indulge in the ultimate sanctuary within your private haven. The master bedroom, a symphony of opulence, promises a serene ambiance where each facet whispers classy luxury. Soft, plush textures caress your senses, while panoramic windows frame a mesmerizing vista of the city's mesmerising views. Here, amidst the grandeur, you'll feel like you're floating on air, with the world at your feet.

YOUR ROYAL RETREAT



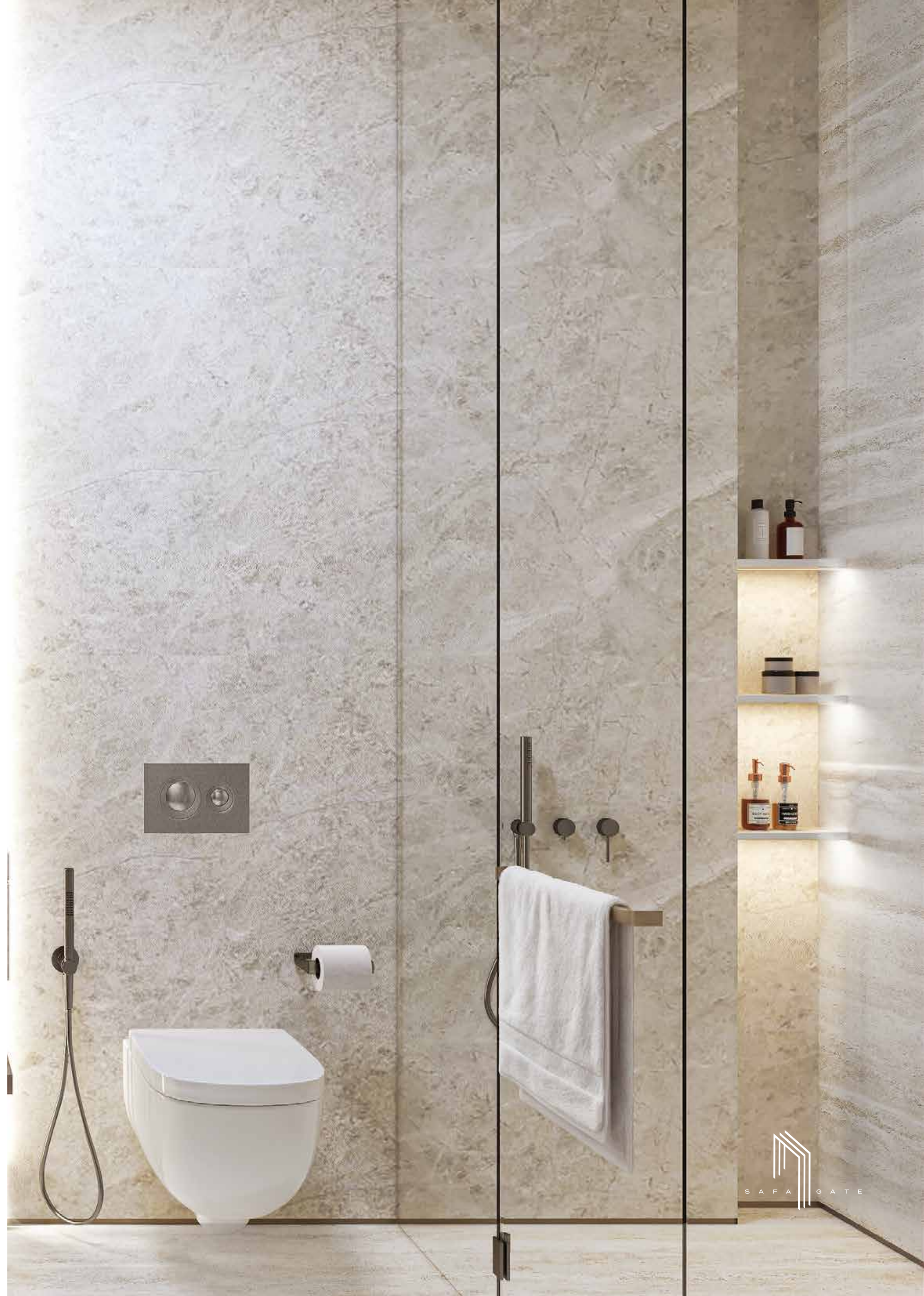


D A M A C S A F A G A T E











DAMAC PROPERTIES

LIVE THE LUXURY

Since 2002, DAMAC Properties has been at the forefront of the Middle East's luxury real estate market, delivering award-winning residential, commercial and leisure properties across the region and the world. Invest with DAMAC and partner with a globally recognised leader in premium real estate development.

*As of Q3 2024



47,600+
UNITS DELIVERED*



40,000+
UNITS IN PROGRESS*



6 MASTER PLAN COMMUNITIES
LEADING REAL ESTATE DEVELOPER IN THE UAE



80+ M SQ FT
PROJECTS UNDER PLANNING & DEVELOPMENT



10+ CITIES
GLOBAL PRESENCE



GLOBAL BRAND COLLABORATIONS



LUXURY BY APPOINTMENT

CONTACT US AT ANY OF OUR OFFICES OR VISIT [DAMACPROPERTIES.COM](https://damacproperties.com)

UNITED ARAB EMIRATES

Dubai
Tel: 800-DAMAC (800-32622)
E-mail: dubai@damacgroup.com

Park Towers – Sales Centre
Dubai International Financial Centre

AYKON City – Sales Centre
Floor 63, Sheikh Zayed Road

DAMAC Hills – Sales Centre
Golf Veduta, Townhouse TH2

DAMAC Hills – Sales Centre
Bellavista (Carson Building)

DAMAC Hills 2 – Sales Centre
Amazonia Cluster, Villa 333

DAMAC Hills 2 – Sales Centre
Water Town

QATAR

Building 90, New Solta Area
Ali bin Abi Talib Street
Next to Omar bin Al Khattab
Health Centre
Tel: +974 44 666 986
Fax: +974 44 554 576
E-mail: doha@damacgroup.com

KINGDOM OF SAUDI ARABIA

DAMAC Towers Riyadh
South Tower
Olaya District
King Fahd Road
PO Box 102460
Tel: +966 11 835 0300
E-mail: ksa@damacgroup.com

TURKEY

Levazim, Mah. Koru Sk.
Zorlu Centre No. 2
IC Kapi No. 347,
Beşiktaş/Istanbul
Turkey
Tel: +90 212 892 0327
Fax: +90 212 890 7184
E-mail: turkey.office@damacgroup.com

UNITED KINGDOM

DAMAC Tower
63-71 Bondway London
SW8 1SQ
Tel: +44 (0) 207 590 8050
damactower.co.uk

CHINA

Beijing
East Tower
No.1 East Middle 3rd Road
Beijing 100020
4th Floor
Unit O3

Shanghai
3 Corporate Avenue
168 Hubin Road,
Huangpu District
Shanghai 25F
25th Floor
Units 2510-2511

HONG KONG

ICBC Tower
Three Garden Road, Central
15th Floor
Suite 1511

SINGAPORE

Asia Square Tower 1
Marina View, Marina Bay
Singapore 018960
11th Floor
Unit 11-06





FOR BOOKING & DETAILS

London Office

**The Suite: B5-21 Room 21 Floor 5 Block B The Vista Centre, 50 Salisbury Road
Hounslow London TW4 6JQ**

 **+44 203 371 1111**

 **+44 7413 968696**

www.ldnrealtors.co.uk